



Founded in 1976
Over 600 Members Worldwide

connecting you to the world of precious metals®





International Precious Metals Institute

- Serves as a Global Platform for the Precious Metals Community
- Hosts an Annual International Conference
- Hosts Committee Seminars and Webinars
- Facilitates Regional and International chapters
- Periodic Publications and monthly Newsletter
- Fosters unparalleled Networking Opportunities for Members

Our members come from the following fields:

- Refining
- Recycling
- Manufacturing
- Automotive
- Electronics
- Jewelry
- Pharma
- Bio Medical
- Chemicals
- Laboratories
- Exploration & Mining
- Banking
- Trading & Finance
- Insurance
- Secure Transportation



What We Do

Annual conference is the main IPMI event held each year in June. The 4 day Global Event typically attracts over 500 from all segments of the precious metal industry.

Seminars focus in depth on specific topics: precious metal markets, economics, regulations, and much more.

Committees purpose is to provide a forum for focused work and distribution of information on topics pertinent and relevant to the group.

Chapters attract regional members and also serve as a good introduction to the Precious Metals Industry for many younger members.

Our Committees

- Sampling & Analytical Committee
- Platinum Group Metals Refiners Committee
- Security and Anti-Money Laundering Committee
- Environmental Health and Safety Operations Committee
- Legislative and Regulatory Affairs Committee
- Sustainability and ESG "SESG" Committee
- Women of IPMI

Our Chapters

- European Chapter
- New England Chapter
- New York Chapter



International Precious Metals Educational and Scientific Foundation

- Dedicated to promoting Science and Technology within the Precious Metals Industry
- Host many technical sessions at our Annual Conference and Seminars
- Produces the annual IPMI Journal
- Carries on long-standing Charitable Mission:
 - Attracting a new generation through Student Awards Program
 - Honor Institutional Leadership through our Premier Awards Program
 - Hold annual Jewelry Design Awards Program since 1991



IPMI 47th Annual Conference Premier Awards

IPMI Junichiro Tanaka Award

Recognizing exceptional contribution to the precious metals industry

Dr. Gaetano Cavalieri, President of the CIBJO

IPMI Henry J Albert Award, Sponsored by BASF

Recognizing outstanding contribution to the science and technology in precious metals

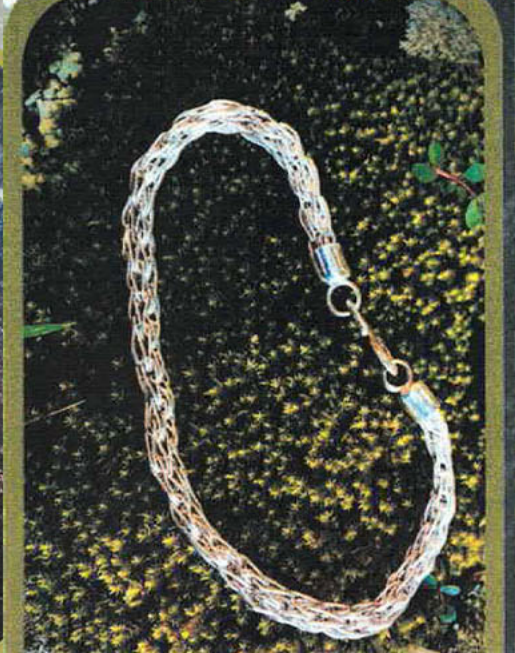
Prof. Charles Sykes, Tufts University

IPMI Junichiro Tanaka Award

Recognizing outstanding achievement of a woman in the field of precious metals

Prof. Franziska Schoeneback, RWTH Aachen University







IPMI New England Chapter Jewelry Design Competition

Annual Competition established in 1991

Showcase, Recognize, and Award Jewelry Design Students:

- Enrolled in qualified metalsmithing or jewelry design programs
- Judged on the following criteria:
 - Effective and unique design
 - Use of materials
 - Originality
 - Workmanship
 - Functionality to wear as jewelry
 - Marketing potential
 - Presentation quality

Over \$300K has been awarded since the program inception

Details on Award Winners is included in the appendix

The Industry Landscape



In today's world of heightened environmental and social governance, it is more important than ever to ensure the quality and sourcing of precious metals used in jewelry, and to establish high ethical and quality practices for the jewelry trade.

In working together, the CIBJO and the IPMI can use their respective capabilities in concert to contribute to the promotion of Responsible Sourcing of precious metals within the jewelry industry, enhancing the overall sustainability and reputation of the sector.

Refining



IPMI has many member companies included in all stages of refining precious metals. These companies also produce fine precious metals and alloys and precious metal solutions for manufacturing and investment.

A key area of collaboration for the CIBJO and IPMI is refining.

Several IPMI member companies are:

- Good Delivery Refineries
 - LBMA
 - LPPM
- Can also source “Certified” artisanal mined gold
 - Fairmined
 - Swiss Better Gold
- Provide “Certified” responsibly sourced gold such as RJC



Knowledge Sharing & Research



The IPMI membership includes industry leading companies and individuals, covering the entire scientific spectrum within the precious metals industry.

Coupled with the vast experience within the CIBJO's membership, the possibilities for research and sharing of knowledge is endless.



Education & Training



With their combined expertise, the IPMI and CIBJO are well-positioned to provide continual education and training across the precious metals and jewelry industries, to the benefit of both professionals and consumers across the globe.



By utilizing trends and data across the full spectrum of both the precious metals and jewelry industries, companies and individuals can make more informed and better business decisions.

Collaborative Events

As the preeminent organizations for both the precious metals and jewelry industries, the members of both the CIBJO and the IPMI would benefit from collaborative events.

By holding collaborative events, such as joint seminars, members of both organizations would benefit from the exchange of information, great networking opportunities.

Potential Events for Consideration:

- Arezzo, Italy
- Providence, Rhode Island
- Jewelry Session at IPMI Annual Conferences





Larry Drummond

Executive Director

ljdrummond@ipmi.org

www.ipmi.org

Appendix

Appendix

IPMI Membership

Level	Dues	Benefits
Platinum	\$7,500 / \$6,000	<ul style="list-style-type: none">• Preferential consideration for nomination to the Board / EXCO• Special reception at Annual Meeting• Special recognition banner at Annual Meeting and on IPMI website• 1 Designated Representative Plus 6 additional memberships• IPMI Annual Conference, Seminars, and Symposiums Registration Fee Discounts
Palladium	\$5,000 / \$4,000	<ul style="list-style-type: none">• Consideration for nomination to the Board / EXCO• Special recognition banner at Annual Meeting and on IPMI website• 1 Designated Representative Plus 4 additional memberships• IPMI Annual Conference, Seminars, and Symposiums Registration Fee Discounts
Gold	\$2,500	<ul style="list-style-type: none">• Special recognition banner at Annual Meeting and on IPMI website• 1 Designated Representative Plus 2 additional memberships• IPMI Annual Conference, Seminars, and Symposiums Registration Fee Discounts
Silver	\$1,000	<ul style="list-style-type: none">• Special recognition banner at Annual Meeting and on IPMI website• 1 Designated Representative Plus 1 additional membership• IPMI Annual Conference, Seminars, and Symposiums Registration Fee Discounts
Individuals & Governments	\$200	<ul style="list-style-type: none">• IPMI Annual Conference, Seminars, and Symposiums Registration Fee Discounts
Associate	\$100	<ul style="list-style-type: none">• For employees of Platinum, Palladium, and Gold member companies attending the Annual Meeting (non-voting)
Student	No Dues First Year \$25/Yr Thereafter	<ul style="list-style-type: none">• Non-voting
Honorary	No Dues	<ul style="list-style-type: none">• Non-voting (except Emeritus)

Appendix

IPMI Membership

The Board of Directors has approved a new dues structure which reflects IPMI's reorganization from a purely charitable organization to the premier trade association for the precious metals industry. The "new" IPMI will focus on membership services and benefits as well as IPMI's role in international public affairs. At the same time, IPMI's original charitable mission remains in place through the IPMI Scientific and Educational Foundation. The new Dues Structure covers the activities of both facets of the IPMI.

New Premier Membership Levels

We have changed the names of the various levels of membership and have added two new higher premier membership levels - Platinum and Palladium. These new levels reflect a level of commitment supported by many of our "bedrock" member companies and come with a number of extended benefits, including extra memberships, special company recognition, and most importantly increased consideration to become a member of the Board of Directors and the Executive Committee (EXCO).

The Platinum and Palladium levels also come with an incentive for companies with less than 100 employees globally. We recognize and appreciate the financial and resource commitment from companies of this size and have created special rates for these two premier levels.

Gold and Silver Membership Levels

The previous Patron and Sustaining levels are now called Gold and Silver, respectively. The Gold level includes one additional membership. (Please see the dues chart for complete details.)

Discounted Rates

All membership levels will receive the discounted member rate for all IPMI events, including seminars, the Platinum Week Dinner, and especially the Annual Meeting in June.

Implementation Process

Our new dues structure will begin January 1, 2020 and run the calendar year to December 31. For 2020, Members who have paid their 2019 dues will receive a 50% credit until April 2020 toward the new dues.

Appendix

IPMI Membership

FAQs

Q1) I'm currently a Patron Member and my company has less than 100 employees. I want to be at the highest level of membership. How would this work?

Answer: You would become a Platinum Member of IPMI. Because you have less than 100 employees, you would be assessed 2020 dues in the amount of \$4,750. This is calculated at \$6,000 less a one-time credit of \$1,250.

Q2) I'm currently a Sustaining Member and would like to upgrade to Gold. How would this work?

Answer: You would be assessed 2020 dues of \$2,000. This is calculated at \$2,500 less a onetime credit of \$500.

Q3) I am an Individual Member and paid my dues in July 2019. When do I have to pay the new dues to take advantage of the discounted member rates for events, especially the annual meeting?

Answer: You will need to pay the new dues by April 1, 2020 to qualify for the discounted rates. Please note we are granting an exception this year only and members who are current with their dues will be allowed to get the discounted member rate for IPMI events taking place in February and March. In your case, your 2020 Individual dues assessment will be \$150 (\$200-\$50).

Q4) I am an Individual Member and haven't decided yet if I want to renew my membership, but I know I will be attending the Annual Conference in June 2020. Will I still receive the IPMI news and be on the distribution list for various announcements? What will my 2020 dues cost?

Answer: We, of course, want you to remain as an IPMI member, attend our Annual Conference at a discounted rate, and receive all the benefits of membership. As you have paid your current dues, we will keep you as an active member through April 2020 and you will continue to receive our various announcements and have access to the Members section of the website. Your event discounts will be valid for events up through March 31st. To receive the discounted rate for events after April 1, 2020 including the Annual Conference, you would have to have paid your 2020 dues prior to registration. Assuming you do this after April 1, 2020 your new dues assessment would be \$200.

Appendix

2023 IPMI New England

31st Annual Jewelry Design Competition Winners

Katy Jeffries

Carol Tyler Memorial Award, University of Massachusetts Dartmouth

Jules Grande

IPMI Chairman's Award, Massachusetts College of Art and Design

Sandra Mora

Richard (Dick) Casey, Sr. Memorial Award, Rhode Island College

Jules Grande

New England Chapter Award, Massachusetts College of Art and Design

Mya Ferreira

Alumni Artist Award, University of Massachusetts Dartmouth

Viviana Campoverde

Technical Award, Massachusetts College of Art and Design

Appendix



2023 Student Award Winners

IPMI Ames Goldsmith Colonial Metals Student Award
Recognizing Achievement in Precious Metals Research
High-Throughput Materials Discovery with Nanomaterial Megalibraries
Carolin Wahl, Northwestern, USA

IPMI Student Award
Structures and properties investigation of the supercrystals of
atomically precise metal nanoclusters
Li Hao, Anhui University, China

IPMI Colonial Metals
Durable and high-performance Proton Exchange Membrane Electrode
Assembly through ZrO_x decorated Pt nanoparticles
Shi Schuyler Zixiao, Cornell, USA

IPMI Sabin Metal Corporation Ron Bleggi Student Award
Preparation of mesoporous silica supported gold nanoparticle
catalysts using reversible ionic liquids
Zengran Sun, Washington State University, USA

IPMI Metalor Technologies Student Award
Design, Synthesis, and Application of Sterically-Defined Biaryl L-
Shaped NHC Ligands for Cross-Coupling Reactions
Tonglian Zhou, Rutgers University, USA

IPMI Gero Family Trust Bright Futures Student Award
Tunable Catalytic Systems for Selective Plastic Depolymerization via
Bifunctional Hydrocracking
Anna Brenner, MIT, USA

IPMI Johnson Matthey Student Award
Rh(III)-catalyzed three-component carboamidation reaction toward the
synthesis of unnatural peptides
Christopher Lamartina, Columbia University, USA
Supervisor: R. Jin

IPMI European Chapter
Zhouran Qiao, Imperial College

IPMI Fidelitrade Intern Award
Non-destructive methods for measuring texture & Advancement of
automated measurement on grain size
Kirsten Sjoberg, Internship at Materion

Appendix



2023 IPMI Annual Conference Agenda

Saturday June 10

IPMI Golf Tournament at the Phoenician Golf Club

Registration Room Opens
The Meeting Place

Women of IPMI
Student Meet & Greet — by invitation only
The IPMI Experience for First-Time Attendees

Welcome Reception
Dueling Piano Bar - Open Bar

Sunday, June 11

Continental Breakfast
Registration
The Meeting Place
Technical Sessions

Spouse Event
Brunch

Session A - World of PM Finance - Jonathan Butler, Moderator

Presenters:
Jonathan Butler, Mitsubishi - Demand - PGM Demand in a Changing Economic Landscape
Wilma Swarts, Metals Focus- Supply - Implications of Tightening Margins on Miners and Recyclers Expansion Plans

Panelists:
David Holmes, Heraeus
Grant Stuart, Sibanye Stillwater
Wilma Swarts, Metals Focus
Thierry Van Kerckhoven, Umicore

Morning Break

Session B - Alternative Energy & Future Impact on PGM's

Matt Watson, Precious Metals Commodity Mgmt. LLC, Moderator

Presenters:
Stewart Brown, Johnson Matthey - PGM in the Hydrogen Economy, Addressing Availability Challenges
Matt Watson – Precious Metals Commodity Mgmt. LLC- Alternative Energy & Future Impact on PGM's

H2 Economy Panel:
Stewart Brown, Johnson Matthey
Bodo Albrecht, BASF

Member's Meeting and IPMI Luncheon

Session C - World of PM Finance - Gold & Silver

Philip Newman, Metals Focus, Moderator

Presenters:
Rohit Savant, CPM Group - The Gold Market Outlook
Bart Melek, TD Securities - Silver Has Game

Panelists:
All Presenters plus
Steve Scacalossi, CIBC
Keith Weiner, Monetary Metals

Young Professionals Social
Premier Member Social — by invitation only
Tanaka/Metalor Reception

The IPMI Concert Event - Radio Gaga Tour
The Music and Spirit of Queen Meets Lady Gaga

Monday, June 12

Continental Breakfast

Registration
Exhibit Booths
The Meeting Place
Technical Sessions

Appendix



2023 IPMI Annual Conference Agenda

Session D - Sustainability ESG

Jimmy Gavilan, Gavilan Commodities, Sam Sabin, Sabin Metal, Moderators

Presenters:

John Mulligan, World Gold Council - Gold Industry Responsible and Sustainability Principles

Malcom Harris, Novisto - ESG Metrics and Reporting Platform

Nirali Shah, Responsible Gold - Digitization and Tokenization Gold Provenance Platform

Panelists:

Panelists will be all the presenters

AM break

Session E - Responsible Sourcing

Randy Weinerman, Mitsubishi, Moderator

Presenters:

Neil Harby, LBMA - LBMA Responsible Sourcing

Jonathan Butler for LPPM - Accepting Responsibility – The LPPM’s Programme and the PGM Supply Chain

Randy Weinerman, Mitsubishi - US Corporate Transparency Act

Panelists:

All Presenters plus

Ruth Leland, Johnson Matthey

Samantha McCourt, Metalor

Session F PGM & AutoCat Recycling and Refining

Mark Caffarey, Umicore, Moderator

Presenters:

Mohammed Doost, pH7 - Circular Economy for the Green Transition: An Overview of pH7 Technologies’ Sustainable Process

Don Weatherbee, Regenx Tech Corp. - The Future of Precious Metal Recovery – An Introduction to Regenx

Panelists:

All Presenters plus

David Carl, BASF

Lee Hockey, Lee Hockey Consultancy

Session G - Jewelry

Zibi Milkiewicz, Refinery Group Poland, Moderator

Presenters:

Gaetano Cavalieri, CIBJO - A Holistic Approach to Responsible Sourcing and Supply Chain Integrity in the Jewelry Industry

Joe Cavatoni, World Gold Council - Gold Demand for Jewelry - Past, Present Trends and Future Possibilities

Elan Farbiarz, Italpreziosi - Sourcing the Jewelry Supply Chain Ethically: Today and Tomorrow

Preventing Auto Catalyst Theft (PACT) Committee Meeting

Afternoon Party

Happy Hour

Sabin Metal Corporation Reception

One of These Nights - A Tribute Concert to the Music of The Eagles

Tuesday, June 13

Continental Breakfast

Registration

Exhibit Booths

The Meeting Place

Technical Sessions

Cybersecurity Workshop

Scott Schwartz, FidelityTrade

AM break

Appendix

2023 IPMI Annual Conference Agenda



SAC Workshop

Algis Naujokas, Sabin Metal and Stacey Santolli, BASF

Presenters:

Jonathan Jodry, Metalor - A Deep Dive into Method Validation

Panelists:

SAC Round Robin Discussion and Path Forward - Algis Naujokas and Stacey Santolli

New Horizons

Federico Padrono Martini, IKOI

Presenters:

Steve Izatt, IBC Advanced Technologies - Achieving Iridium Sustainability from Spent Secondary Sources

Federico Padrono Martini, IKOI, Moderator - Mechanical Operation for Producing Silver Bars: A More Sustainable Alternative

Luca Fiorini, Tera Automation - Vacuum Tunnel Furnace for Continuous Production of Pt/Pd/Au/Ag bars

Calvin H. Ray Jr., Precient Technologies - Membrane Biofilm Reaction

Ingo Wolf, Osmium Institute - International Expansion of Crystalline Osmium Business

Bradley Lusk, Precient Technologies - Using the Membrane Biofilm Reactor (MBfR) to Recover Platinum Group Metals (PGM), Rare Earth Elements (REE), and Valuable Materials as Nanoparticles from Wastewater

Student Lunch

Student Presentations Part 1

PM Break

Student Presentations part 2

President's Reception

Awards Banquet

